

Animal & Veterinary Science



Animal & Veterinary Science:
Classes that are required to finish this CTE Pathway.

Required Courses

- o Animal Science 1 A&B (1.0)
- o Animal Science 2 A&B (1.0)

Elective Courses (2.5 credits)

- o Intro to Ag Sci 1A & 1B (1.0)
- o Biology-Ag Science A&B (1.0)
- o Business Communication 1 (.5)
- o Business Leadership 1 (.5)
- o CTE Internship (.5)

GCHS 24-25



Agricultural Mechanics Systems



Agricultural Mechanics Systems:
Classes that are required to finish this CTE Pathway.

Required Courses

- o Ag Mechanics & Tech 1A&B(1.0)
- o Ag Mechanics & Tech 2A&B (1.0)

Elective Courses (1.0 credit)

- o Intro to Ag Sci 1A & 1B (1.0)
- o Biology-Ag Science A&B (1.0)
- o Business Communication 1 (.5)
- o Business Leadership 1 (.5)
- o Construction Trades Foundation Intro to Construction (.5)
- o Welding Tech, Entry (.5) (Welding Tech 1)
- o BTECH Welding (1.0)
- o BTECH Auto Service Tech (1.0)
- o CTE Internship (.5)

GCHS 24-25



Food Science, Dietetics & Nutrition



Food Science, Dietetics & Nutrition:
Classes that are required to finish this CTE Pathway.

Required Courses

- o Dietetics & Nutrition 1 (Foods 2)(.5)

Elective Courses (2.5 credits)

- o Food & Nutrition (.5)
- o USUHDFS 1500/Human Dev. (.5)
- o NDFS 1020 Nutrition (.5)
- o Med Anatomy & Phys A (.5)
- o Med Anatomy & Phys B (.5)
- o CTE Internship (.5)

GCHS 24-25



Plant Science



Plant Science:
Classes that are required to finish this CTE Pathway.

Only one of the following courses is required, but all can be taken & will count toward the pathway

Required Courses

- o Floriculture (.5)

AND/OR

- o Greenhouse Management (.5)

Elective Courses (2-2.5 credits)

- o Intro to Ag Sci 1A & 1B (1.0)
- o Floriculture Advanced (.5)
- o Biology-Ag Science A&B (1.0)
- o Business Communication 1 (.5)
- o Business Leadership 1 (.5)
- o Plant & Soil Science A&B (1.0)
- o CTE Internship (.5)

GCHS 24-25



Construction & Structural Systems



Construction & Structural Systems:
Classes that are required to finish this CTE Pathway.

Required Courses

- o BTECH ConstructionTech (.20)

Elective Courses (1.0 credit)

- o Construction Trades Foundation Intro to Construction (.5)
- o Woods 1 (.5)
- o Entrepreneurship (.5)
- o Interior Design 1 (.5)
- o Welding Tech, Entry (.5) (Welding Tech 1)
- o CTE Internship (.5)

GCCHS 24-25



Architectural & Interior Design



Architectural & Interior Design:
Classes that are required to finish this CTE Pathway.

Required Courses

- o Interior Design 1 (.5)
- o Interior Design 2/IDT1010 (.5)

Elective Courses (2.0 credits)

- o Business Communication 1 (.5)
- o Digital Media 1 (.5)
- o Construction Trades Foundation Intro to Construction (.5)
- o BTECH Electrician (1.0)
- o BTECH Plumbing (1.0)
- o CTE Internship (.5)

GCCHS 24-25



Broadcasting & Digital Media



Broadcasting & Digital Media:
Classes that are required to finish this CTE Pathway.

Required Courses

- o Video Production 1 (.5)

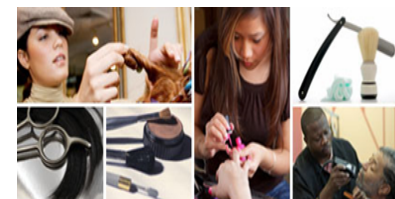
Elective Courses (2.5 credits)

- o Digital Media 1 (.5)
- o AR/VR UVU DGM1645 (.5)
- o Computer Programming 1 (.5)
- o Comp Sci. Principles/CS1030 (.5)
- o Web Development 1 (.5)
- o Drone Intro (Video Prod 2) (.5)
- o BTECH Digital Media 2 (.5)
- o CTE Internship (.5)

GCCHS 24-25



Personal Care Services (Cosmetology)



Personal Care Services:
Classes that are required to finish this CTE Pathway.

Required Courses

Pathway can be completed with only the required course

- o Cosmetology (3.0)

Elective Courses (if needed)

- o Business Office Specialist (.5)
- o Business Leadership (.5)
- o Entrepreneurship (.5)
- o Marketing 1 (.5)
- o CTE Internship (.5)

GCCHS 24-25



Finance



Finance:

Classes that are required to finish this CTE Pathway.

Only one of the following courses is required, but all can be taken & will count toward the pathway

Required Courses

- o Investing & Wealth Mgmt (.5)

AND/OR

- o BTECH Acctg 2 (1.0)

Elective Courses (1.5 credits)

- o Accounting 1/BUSN111 (.5)
- o Business Communication 1 (.5)
- o Business Law (.5)
- o Business Office Specialist (.5)
- o USU Econ 1500 (.5)
- o Entrepreneurship (.5)
- o Marketing 1 (.5)
- o Sports & Recreation Mktg (.5)
- o Web Development 1 (.5)
- o Bus., Fin., & Mktg Capstone (.5)
- o CTE Internship (.5)



GCHS 24-25

Business



Business:

Classes that are required to finish this CTE Pathway.

Required Courses

- o Business Management (.5)

Elective Courses (2.5 credits)

- o Accounting 1 OR BUSN 111 (.5)
- o Business Communication 1 (.5)
- o Business Law (.5)
- o Bus., Fin., & Mktg Capstone (.5)
- o Business Leadership (.5)
- o Business Office Specialist (.5)
- o Digital Media 1 (.5)
- o Entrepreneurship (.5)
- o USU Econ 1500 (.5)
- o Marketing 1 (.5)
- o Sports & Recreation Mktg (.5)
- o Web Development 1 (.5)
- o CTE Internship (.5)



GCHS 24-25

Marketing



Marketing

Classes that are required to finish this CTE Pathway.

Required Courses

- o Digital Marketing (.5)

Elective Courses (2.5 credits)

- o Accounting 1 or BUSN 111 (.5)
- o Business Communications 1 (.5)
- o Business Office Specialist (.5)
- o Business Law (.5)
- o Bus., Fin., & Mktg Capstone (.5)
- o Digital Media 1 (.5)
- o USU Econ 1500 (.5)
- o Entrepreneurship (.5)
- o Marketing 1 & Exploring Business (.5)
- o Sports & Recreation Mktg (.5)
- o Web Development 1 (.5)
- o CTE Internship (.5)



GCHS 24-25

Hospitality & Tourism



Hospitality & Tourism:

Classes that are required to finish this CTE Pathway.

Required Courses

- o Hospitality & Tourism (.5)

Elective Courses (2.5 credits)

- o Accounting 1 or BUSN 111 (.5)
- o Business Communications 1 (.5)
- o Business Office Specialist (.5)
- o Business Law (.5)
- o Business Leadership (.5)
- o Bus., Fin., & Mktg Capstone (.5)
- o Digital Media 1 (.5)
- o USU Econ 1500 (.5)
- o Entrepreneurship (.5)
- o Marketing 1 (.5)
- o Sports & Recreation Mktg (.5)
- o Web Development 1 (.5)
- o CTE Internship (.5)



GCHS 24-25

Programming & Software Development



Programming & Software Dev.:

Classes that are required to finish this CTE Pathway.

Required Courses

Only one of the following courses is required, but all can be taken & will count toward the pathway

- o Computer Prog 2/CS1400 (.5) **OR**
- o Database Development (.5) **OR**
- o Gaming Dev. Fundamentals 1 (.5)

Elective Courses (1.5-2.5 credits)

- o Computer Programming 1 (.5)
- o AP Computer Science ABC (1.5)
- o Comp Sci. Principles/CS1030 (.5)
- o Math 1050 (.5)
- o IT STEM Academy/BTECH IT (.5)
- o Gaming Dev. Fundamentals 2 (.5)
- o Computer Programming, Adv. (.5)
- o Robotics 1 (.5)
- o Web Development 1 (.5)
- o CTE Internship (.5)

GCHS 24-25



Web Development



Web Development:

Classes that are required to finish this CTE Pathway.

Required Courses

- o Web Development 1 (.5)
- o Web Development 2 (.5)

Elective Courses (2.0 credits)

- o AR/VR /UVU DGM1645 (.5)
- o Comp Sci. Principles/CS1030 (.5)
- o Database Development (.5)
- o Computer Programming 1 (.5)
- o Digital Media 1 (.5)
- o Entrepreneurship (.5)
- o Marketing 1 (.5)
- o Math 1050 (.5)
- o IT STEM Academy/BTECH IT (.5)
- o CTE Internship (.5)

GCHS 24-25



Fashion, Apparel & Textiles



Fashion, Apparel & Textiles:

Classes that are required to finish this CTE Pathway.

Required Courses

Only one of the following courses is required, but all can be taken & will count toward the pathway

- o Sewing Constr & Textiles 2 (.5) **OR**
- o BTECH Fashion Merch. (1.0)

Elective Courses (1.5 -2.0 credits)

- o Fashion Design Studio (.5)
- o Sewing Constr & Textiles 1 (.5)
- o USU FSCE 1040- Sports & Outdoor Product Design (.5)
- o Digital Media 1 (.5)
- o CTE Internship (.5)

GCHS 24-25



Outdoor Product Design & Development



Outdoor Product Development & Design:

Classes that are required to finish this CTE Pathway.

Required Courses

- o Sewing Constr. & Textiles 1 (.5)
- o Sewing Constr. & Textiles 2 (.5)
- o USU-FSCE 1040 - Sports & Outdoor Product Design (.5)

Elective Courses (1.5 credits)

- o Digital Media 1 (.5)
- o Fashion Design Studio (.5)
- o BTECH Digital Design (1.0)
- o BTECH Drafting & Design (1.0)
- o CAD Mechanical Design 1 (.5)
- o CTE Internship (.5)

GCHS 24-25



Dental Assistant

Medical Assistant

Nurse Assistant (CNA)

Pharmacy Technician



Dental Assistant:

Classes that are required to finish this CTE Pathway.

Medical Assistant:

Classes that are required to finish this CTE Pathway.

Nurse Assistant (CNA):

Classes that are required to finish this CTE Pathway.

Pharmacy Technician:

Classes that are required to finish this CTE Pathway.

Required Courses

- o BTECH – Dental Assist (1.0)

Required Courses

- o BTECH - Medical Assistant (1.0)

Required Courses

- o BTECH - Nurse Assistant CNA (1.0)

Required Courses

- o BTECH – Pharmacy Tech (1.0)

Elective Courses (2.0 credits)

- o Intro to Health Science (.5)
- o Biotechnology A&B (1.0)
- o NDFS 1020 Nutrition (.5)
- o Med Anatomy & Physiology A (.5)
- o Med Anatomy & Physiology B (.5)
- o Medical Terminology (.5)
- o USU HDFS 1500/Human Dev. (1.0)
- o Psychology 1010 (.5)
- o Sports Med/Exercise Sci A & B (1.0)
- o CTE Internship (.5)

Elective Courses (2.0 credits)

- o Intro to Health Science (.5)
- o Biotechnology A&B (1.0)
- o NDFS 1020 Nutrition (.5)
- o Med Anatomy & Physiology A (.5)
- o Med Anatomy & Physiology B (.5)
- o Medical Terminology (.5)
- o USU HDFS 1500/Human Dev. (1.0)
- o Psychology 1010 (.5)
- o Sports Med/Exercise Sci A & B (1.0)
- o CTE Internship (.5)

Elective Courses (2.0 credits)

- o Intro to Health Science (.5)
- o Biotechnology A&B (1.0)
- o NDFS 1020 Nutrition (.5)
- o Med Anatomy & Physiology A (.5)
- o Med Anatomy & Physiology B (.5)
- o Medical Terminology (.5)
- o USU HDFS 1500/Human Dev. (1.0)
- o Psychology 1010 (.5)
- o Sports Med/Exercise Sci A & B (1.0)
- o CTE Internship (.5)

Elective Courses (2.0 credits)

- o Intro to Health Science (.5)
- o Biotechnology A&B (1.0)
- o NDFS 1020 Nutrition (.5)
- o Med Anatomy & Physiology A (.5)
- o Med Anatomy & Physiology B (.5)
- o Medical Terminology (.5)
- o Sports Med/Exercise Sci A & B (1.0)
- o Psychology 1010 (.5)
- o CTE Internship (.5)

Health Science General



Exercise Science/ Sports Medicine



Diesel



Manufacturing & Production



Health Science General:

Classes that are required to finish this CTE Pathway.

Required Courses

Only one of the following courses is required, but all can be taken & will count toward the pathway

- o Biotechnology A&B (1.0)
- AND/OR
- o Med Anatomy & Physiology A&B (1.0)
- AND/OR
- o Sports Med/Exercise Sci A & B (1.0)

Elective Courses (0-2.0 credits)

- o Intro to Health Science (.5)
- o NDFS 1020 Nutrition (.5)
- o Medical Terminology (.5)
- o USU HDFS 1500/Human Dev. (1.0)
- o Psychology 1010 (.5)
- o CTE Internship (.5)

Exercise Science/Sports Medicine:

Classes that are required to finish this CTE Pathway.

Required Courses

- o Sports Med/Exercise Sci A & B (1.0)

Elective Courses (2.0 credits)

- o Intro to Health Science (.5)
- o Biotechnology A&B (1.0)
- o NDFS 1020 Nutrition (.5)
- o Med Anatomy & Physiology A (.5)
- o Med Anatomy & Physiology B (.5)
- o Medical Terminology (.5)
- o Psychology 1010 (.5)
- o USU HDFS 1500/Human Dev. (1.0)
- o CTE Internship (.5)

GCHS 24-25

Diesel:

Classes that are required to finish this CTE Pathway.

Required Courses

- o BTECH – Diesel (1.0)

Elective Courses (2.0 credits)

- o Ag Mechanics & Tech 1A&B (1.0)
- o Entrepreneurship
- o Welding 2 (.5)
- o BTECH Auto Service Tech (1.0)
- o BTECH Machining Tech (1.0)
- o BTECH Welding Tech (1.0)
- o BTECH Electronics (1.0)
- o CTE Internship (.5)

GCHS 24-25

Manufacturing & Production:

Classes that are required to finish this CTE Pathway.

Required Courses

- o Woods 3 (.5)
- o AM/Robotics STEM (2.0)

Elective Courses (.5 credit)

- o Woods 1 (.5)
- o CTE Internship (.5)

GCHS 24-25

Graphic Design & Communication



Graphic Design & Communication:

Classes that are required to finish this CTE Pathway.

Required Courses

- o Commercial Photo 1(Basic) (.5)

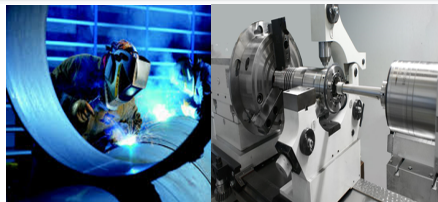
Elective Courses (2.5 credits)

- o Commercial Photo 2 (Adv) (.5)
- o CAD Mechanical Design 1 (.5)
- o Digital Marketing (.5)
- o Digital Media 1 (.5)
- o Entrepreneurship (.5)
- o Interior Design (.5)
- o CTE Internship (.5)

GCHS 24-25



Welding & Machining



Welding & Machining:

Classes that are required to finish this CTE Pathway.

Required Courses

- o Welding Tech, Intermed (.5)
(Welding Tech 3)

Elective Courses (2.5 credits)

- o Welding Tech, Entry (.5)
(Welding Tech 1)
- o BTECH Welding (1.0)
- o BTECH Machining 1 (1.0)
- o CTE Internship (.5)

GCHS 24-25



K-12: Teaching as a Profession



K-12: Teaching as a Profession:

Classes that are required to finish this CTE Pathway.

Required Courses

- o TEAL1010 Aspiring Educators (.5)

Elective Courses (2.5 credits)

- o Teaching as a Profession 1 (.5)
- o Business Communication 1 (.5)
- o English 1010 (.5)
- o HDFS 1500 Human Development (.5)
- o Math 1050 (.5)
- o CTE Internship (.5)

GCHS 24-25



Pre-K: Early Childhood Education



Pre-K: Early Childhood Education:

Classes that are required to finish this CTE Pathway.

Required Courses

- o Early Childhood Education 1 (.5)
- o Early Childhood Education 2 (.5)

Elective Courses (2.0 credits)

- o Child Development (.5)
- o Early Childhood Education 3 (.5)
- o Food & Nutrition (.5)
- o CTE Internship (.5)

GCHS 24-25



Protective Services



Protective Services:

Classes that are required to finish this CTE Pathway.

Required Courses

- o BTECH Wildland Firefighter (1.0)

Elective Courses (2.0 credits)

- o Business Leadership (.5)
- o Intro to Health Science (.5)
- o IT STEM Academy/BTECH IT (.5)
- o Law Enforcement (.5)
- o CTE Internship (.5)